



Constables
SALES & LETTINGS

Hinderton Road , Neston

£245,000



Constables are delighted to offer for sale this beautifully finished two bedroom first floor apartment, located within the highly sought after Renaissance development on Hinderton Road, Neston. Set within the characterful former police station, the building has been expertly transformed to create stylish, secure accommodation reserved for residents aged 55 and over. The location is ideal, with Neston's excellent amenities, shops and transport links all within easy reach.

Residents benefit from an impressive range of communal spaces that elevate day to day living. These include landscaped gardens, plentiful parking, a refined residents' lounge with adjoining kitchen, several peaceful reading and relaxation rooms, library facilities, outdoor seating terraces, an on site development manager, secure entry and private parking provision.

This is one of the larger apartments within Renaissance and enjoys an ensuite bathroom off the master bedroom, along with better-proportioned living accommodation and a spacious kitchen with a window to the rear of the development. This property also comes with a dedicated parking space directly below the apartment.



RENAISSANCE
at Neston

Constables
SALES & LETTINGS

- Two Bedroom Retirement Apartment
- Well Appointed Throughout
- Master Bedroom with En-suite and Dressing Room
- Private Parking Space
- Dual Aspect Windows Living Room / Kitchen
- Private Gated Community

Entrance

Main Reception Area

Communal Lounge

Apartment Entrance

Living Room

13'11 x 18 (4.24m x 5.49m)

Kitchen

Master Bedroom

11'8 x 13'9 (3.56m x 4.19m)

En-suite Shower Room

5'5 x 6'10 (1.65m x 2.08m)

Dressing Room

Second Bedroom

12'1 x 9'11 (3.68m x 3.02m)


Family Bathroom

7'3 x 9'11 (2.21m x 3.02m)



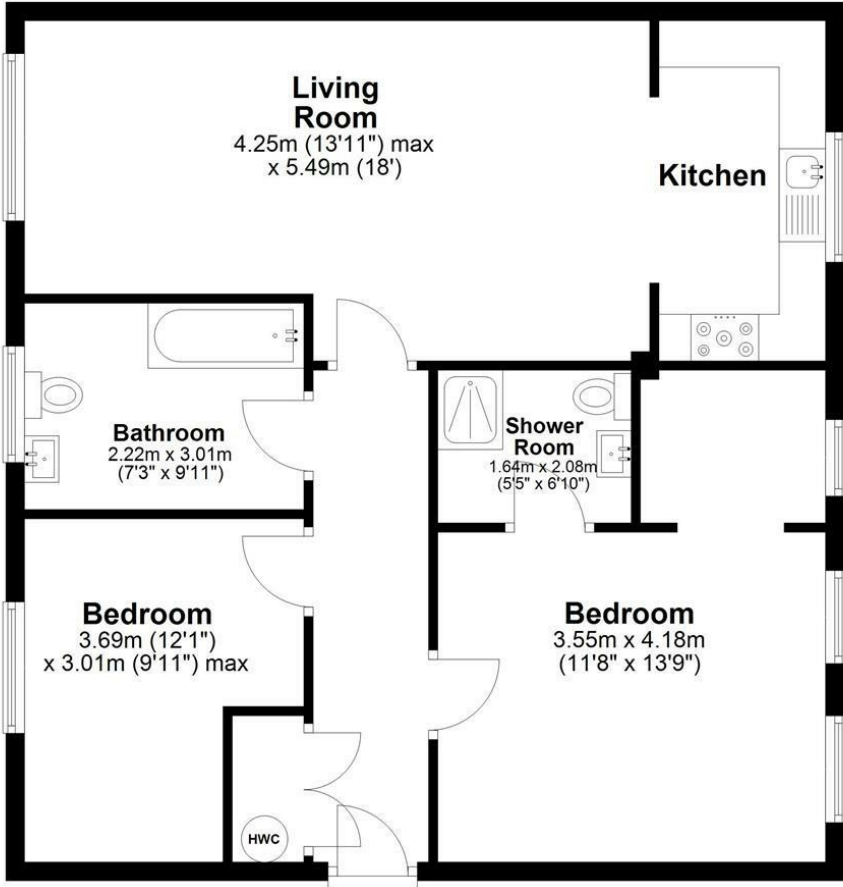


EPC & Floor Plan

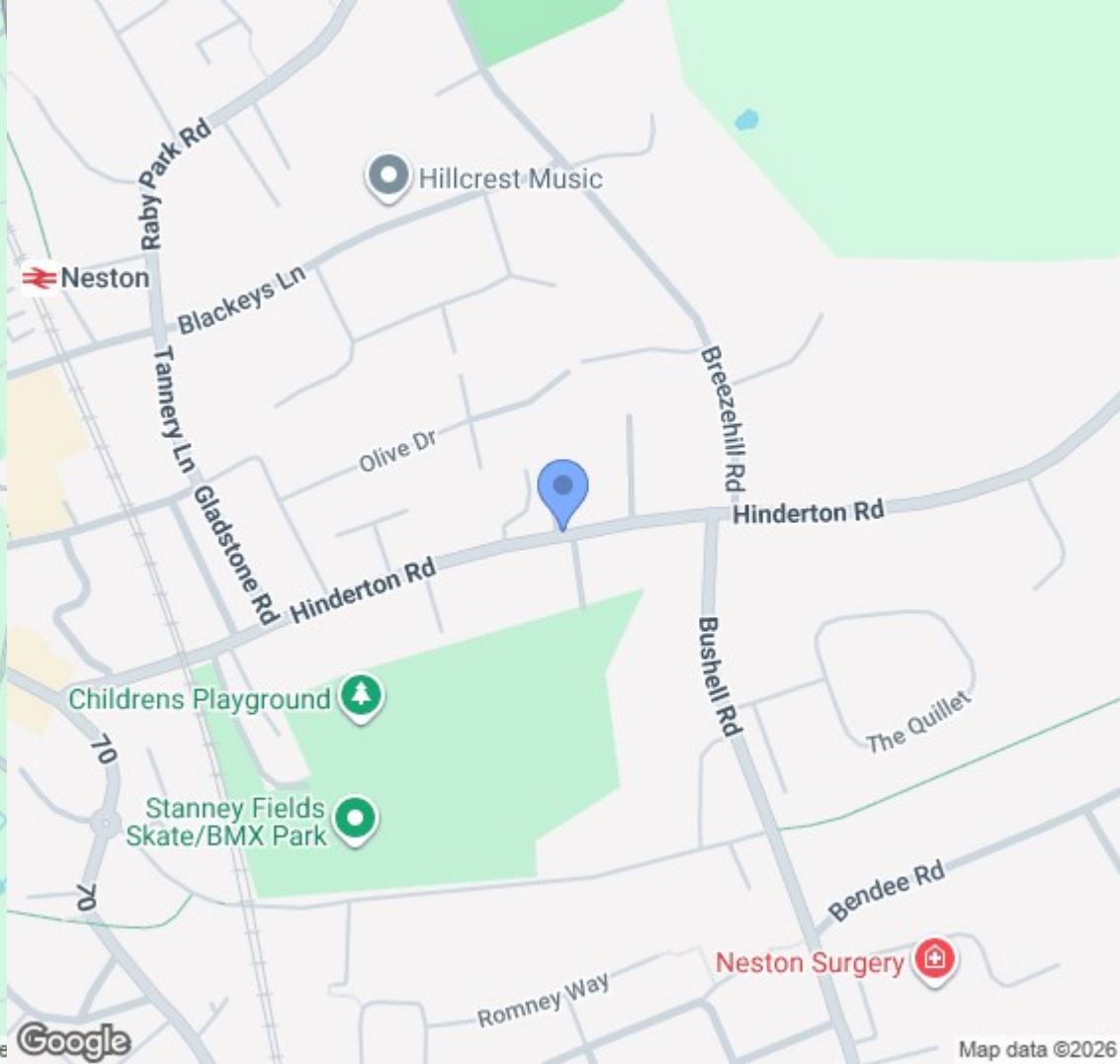
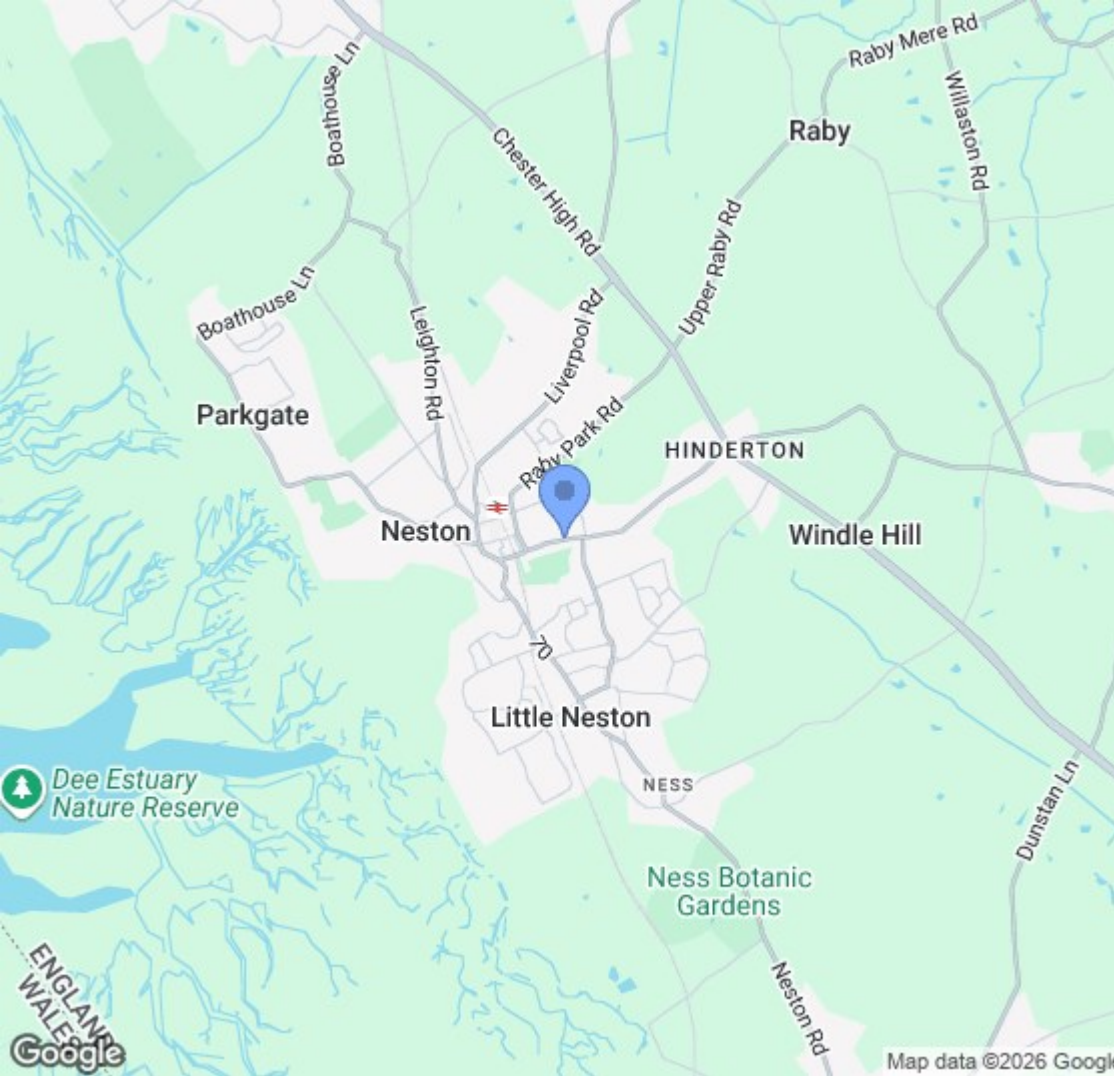
Energy Efficiency Rating		
	Current	Potential
<i>Very energy efficient - lower running costs</i>		
(92 plus) A		
(81-91) B		
(69-80) C		78
(55-68) D	63	
(39-54) E		
(21-38) F		
(1-20) G		
<i>Not energy efficient - higher running costs</i>		
England & Wales	EU Directive 2002/91/EC	

Ground Floor

Approx. 78.2 sq. metres (841.6 sq. feet)



Total area: approx. 78.2 sq. metres (841.6 sq. feet)
19 Renaissance, Hinderton Road, NESTON



Location Map

Constables

S A L E S & L E T T I N G S

21 High Street, Neston

South Wirral, Neston, Cheshire

www.constablesestateagents.co.uk

info@constablesestateagents.co.uk

0151 353 1333